

Care & Maintenance



Door leaf

At least every four months, clean the internal and external door facings and glass surfaces with a soft cloth and hot soapy water; rinse with water and dry off.

PVC-U frames

At least every four months, clean the internal and external surfaces of the frame to remove atmospheric grime; always use a soft cloth with mild liquid detergent solution, rinse with water and dry off.

Hinges

Clean the visible surface of the hinges on an annual basis. They should be kept free from dirt, debris and obstruction at all times. For colour-coated hinges (usually white, brown or gold in colour), use a soft cloth with hot soapy water, rinse with water and dry off then lubricate with a silicone-based spray lubricant.

Locking device

The key-way, latch and keeps should be kept free from dirt, debris and obstruction at all times. Check operation of the key mechanism on regular basis, with the door leaf open. If the key requires excessive force to engage the lock mechanism, then lubricate the key-way with a silicone-based spray lubricant; **do not use oil or grease.**

Lubricate the bevelled or rounded face of the latch and the latch-strike on the keep with a smear of petroleum jelly or grease. This also applies to each additional hook.

Lever handles and letterplates

Annually clean and remove dirt and debris from all moving parts. Lightly oil external moving parts with a light machine oil and wipe excess.

For stubborn stains, use a soft cloth with mild liquid detergent solution, rinse with water and dry off. Polish both handles and letterplates with a **quality wax furniture polish**, applying directly to the cloth and **not** the hardware directly.

Threshold

The term threshold refers to the frame fitting underneath the bottom edge of the door.

The threshold components should be kept free from dirt, debris and obstruction at all times.

Periodically, check that drainage holes are free from any obstruction. If blocked, remove obstruction and flush through with water to ensure correct drainage.

Precautions

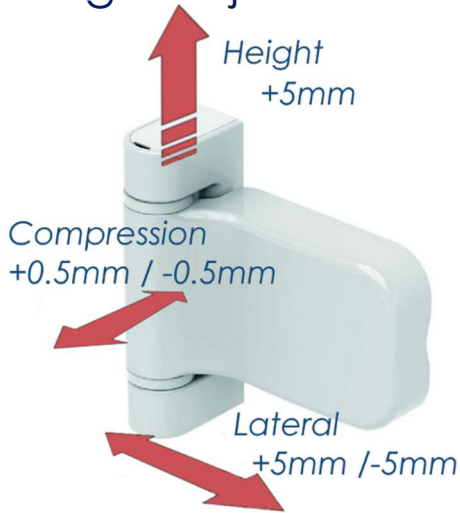
- **Do not** use solvent-based or abrasive cleaning products, or products containing bleaching agents.
- **Do not** use metal polish or a wire brush.
- When using cleaning and lubricating products, always follow these instructions.
- For cleaning products, **always** test a small area of the product in an obscure location first before cleaning any surfaces.

Proper Use & Operation

Locking device

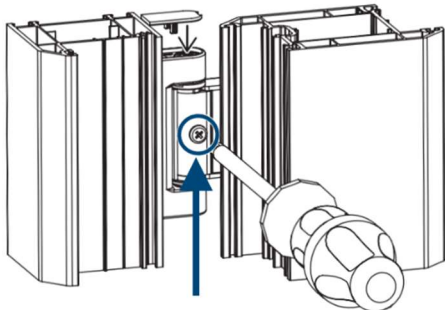
Always – Correct operation of any UPVC or composite door means you **must always** throw handle up when door is closed in frame. Failure to do so (can / will cause the door slab / frame / panel to form a different shape in certain weather conditions.) will void your Guarantee.

Hinge Adjustments

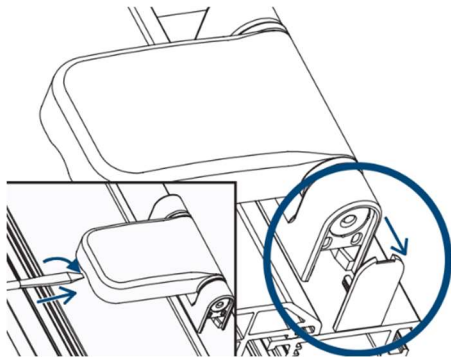


Access to Adjustment Screws

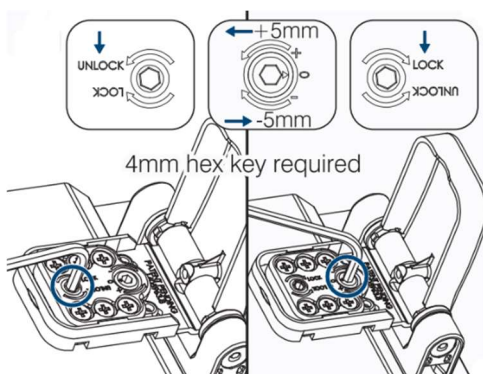
Open door sash to gain access to the security screw location. Remove screw.



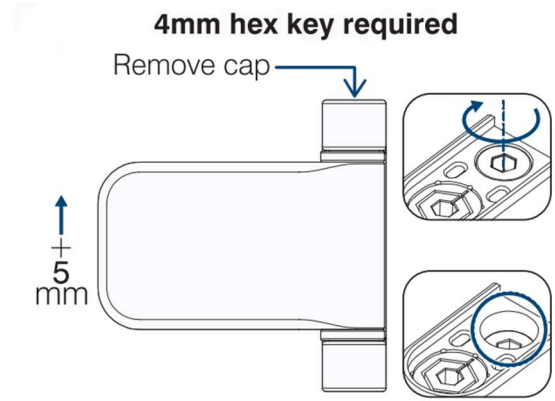
Open Hinge with flat head screwdriver pop hinge caps off with flat head screwdriver.



To adjust lateral position, first turn the unlock screw 1/4 turn. Then use the adjustment screw to adjust up to 5mm in either direction. Finally tighten lock screw

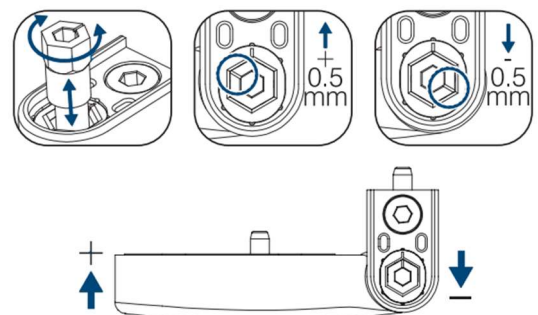


Height Adjustment: Using a 4mm hex key turn the screw down to lift the hinge by up to 5mm.



Compression adjustment: Push out the hinge and turn to alter compression

4mm hex key required



Roller Adjustment

If you have lost seal compression on the handle side of the door. You should follow roller adjustment. You should follow roller adjustment to tighten sash towards frame and increase compression thus reducing any draught or movement

You may have 2 or 4 rollers on your door depending on year of manufacture.

Locate the roller shown in picture, closest to where door requires more compression.

Insert 5mm Allen key and turn ¼ turn at a time till better compression is achieved, whilst checking operation of handle in between each adjustment.

Moving roller closer to frame will Decrease compression.

Moving roller closer to sash will Increase compression.



Keep Adjustment

Roller Keep Adjustment: Should only be adjusted if advised by one of our technicians.

Depending on year of manufacture you may have 3 – 5 keeps on frame of your door.

To adjust roller keep(s) slacken screw above and below and move slightly toward or away from frame as needed.

Closer to frame will Increase compression, closer to sash will Decrease compression.

If door is not latching when closing you can adjust the centre latch keep pictured below.

To adjust latch keep slacken screw above and below and move slightly toward or away from frame as needed. This will also help/remove any door shaking/rattle when closed.

